



# Instructions for Single or Double Deadlock Installation or Replacement for doors 1-3/8" to 1-3/4" thick. Read this instruction carefully before attempting to install lock. Although an untrained person can prepare a door, Wright recommends that a skilled carpenter or locksmith do measurements and drilling.

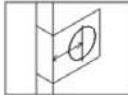
## Tools required for new installation :

Phillips head screwdriver, 2-1/8" hole saw, 1" & 1/8" drill, chisel.

## Tools required for replacement installation :

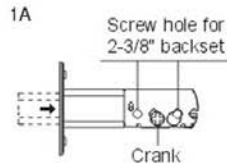
Phillips head screwdriver.

### 1. Latch Backset Adjustment

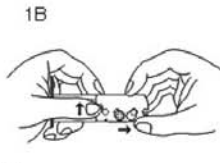


#### Before Proceeding :

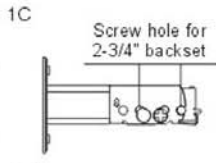
Backset is the distance from the door edge to the center of lock, either 2-3/8" or 2-3/4". Your latch was preset at the factory for 2-3/8" backset. If a 2-3/4" backset is required, follow the adjustment instructions in Step 1A. If 2-3/8" backset is required, go to part 2A of the instructions.



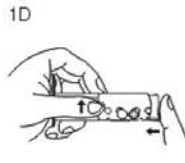
**1A.** If 2-3/4" backset is required, rotate latch cam to retract the latchbolt to the unlock position.



**1B.** Push the change button up. Hold torque plate and torque spring, pull extension plate all the way out.



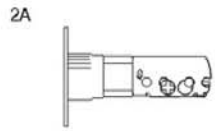
**1C.** Be sure the 2-3/4" stem hole is properly aligned and the change button returns to its original position. Proceed to step 2A.



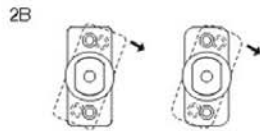
**1D.** Your latch is now set for 2-3/4" backset.

### 2. Latch Face Plate

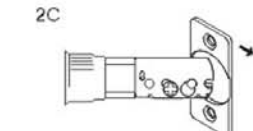
Determine which latch mounting method will be used and make necessary adjustments.



**2A.** If you need a Squared Cornered Mortise Faceplate use as assembled (no adjustment necessary).

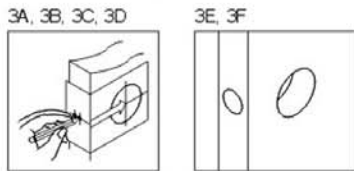


**2B.** For Radius Cornered Mortise Faceplate, remove squared mortise plate. Rotate the Square Corner Latch Faceplate clockwise 20 degrees and pull plate off back of latch. Replace with Radius Cornered Mortise Plate.



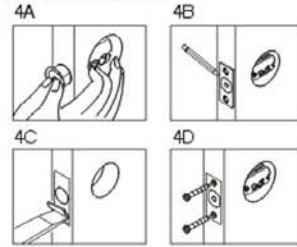
**2C.** With Drive-In Latch installations, rotate latch faceplate clockwise 20 degrees and pull plate off back of latch (no faceplate is needed). Proceed to 3A if this is a new door application and to 5A if the lock is a replacement (uses existing holes.)

### 3. New Door Preparation



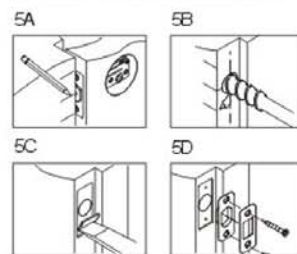
- 3A. Fold template as marked and place on door. If corner of door is beveled, place template on widest side of door.
- 3B. Mark center for door edge for latch bolt as indicated on template.
- 3C. Mark center for hole on door face through guide on template for either 2-3/8" or 2-3/4" backset.
- 3D. Drill 1/8" pilot holes at center marks.
- 3E. Drill 2-1/8" hole on the door face from both sides of door to prevent splintering.
- 3F. Drill 1" hole through door edge for latch bolt.

### 4. Install Latch



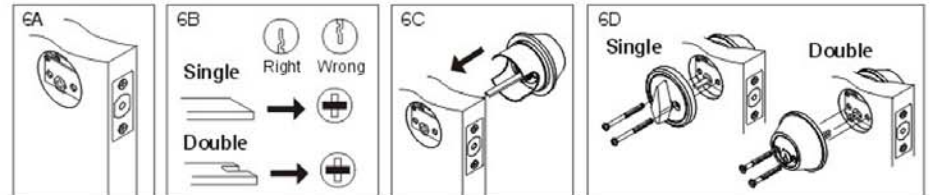
- 4A. For drive in application, drive the latch into the hole on edge of door and go to step 5A.
- 4B. For mortise application, insert latch into hole and trace outline of faceplate on the edge of the door.
- 4C. Chisel until latch face is flush with door edge.
- 4D. Drill pilot holes for plate mounting screws. Insert latch bolt and tighten screws.

### 5. Strike Plate Installation



- 5A. Close door until latch bolt touches doorjamb to locate strike placement. Mark horizontal centerline of strike parallel with the center of the latch bolt.
- 5B. Measure one half of door thickness from doorstop and mark for the vertical centerline of strike. Drill 1" hole, 1/2" deep at the intersection of the horizontal and vertical centerlines.
- 5C. Match screw holes on strike with centerlines on jamb. Mark outline of strike plate and chisel out until strike is flush with jamb. (Approx. 1/8")
- 5D. Install deadlock reinforcement plate and strike plate, tighten screws.

### 6. Install Deadbolt



- 6A. Retract deadbolt to unlock position.
- 6B. Insert exterior portion of deadbolt tailpiece horizontally through latch cam.
- 6C. Press exterior portion of deadbolt flush against door.
- 6D. For single cylinder deadlocks: Install inside turn button and tighten installation screws. For double cylinder deadlocks: Insert interior tail piece vertically through latch cam. Press interior cylinder flush against door and tighten installation screws.

Please call Wright Products Customer Service at:  
1-877-560-6100 if a drilling template is required.